



DOUBLE LAYER CAPSULORRHEXIS DURING CATARACT SURGERY

AUTHORS: TSIRONI S., LOIZOU F., KAPOYRANI V., NTISIOU S., MISIOU K.,
APOSTOLIDOU S., AMPERIADIS E., MOUSIOU F., PSIMENIDOU E., SARAFI A., LIOURA A.

Abstract

- ▶ **Purpose:** To report the unexpected finding of a membrane resembling a second anterior lens capsule during cataract surgery.
- ▶ **Methods:** Presentation of a case of a 83 years old male patient diagnosed with cataract where a second layer of the anterior capsule lens was observed intraoperatively.
- ▶ **Result:** Double-layer capsulorrhexis performance and uneventful integration of cataract surgery with implantation of the intraocular lense in the capsular bag.
- ▶ **Conclusion:** The presence of a double-layered anterior lens capsule is an unusual intraoperative finding wich can be dealt with a double-layered continuous curvilinear capsulorrhexis uneventfully

Clinical Case

Case history:

- ▶ 83 years old male reporting progressive decline in visual acuity of OS
- ▶ Medical general history: High blood pressure, benign prostate enlargement, nephrolithiasis

Clinical examination upon arrival at the hospital

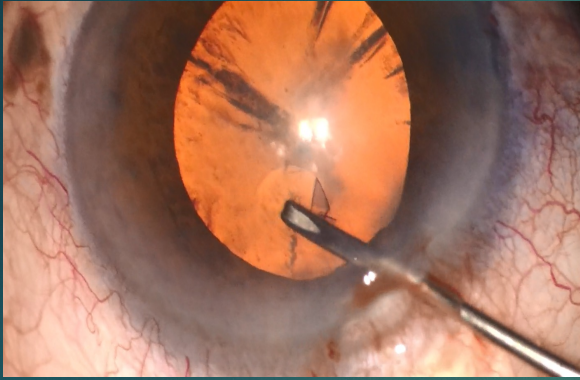
- ▶ V.A.: OD: 10/10sc
OS: 4/10sc, pinhole no improvement
- ▶ Anterior segmene: OD: IOL in the bag
OS: mixed nuclear and cortical cataract
- ▶ Intraocular pressure: OD: 14mmHg
OS: 12mmHg
- ▶ Funduscopy: OD: Optic disc: pale pink with sharp margins. C/D 0,35. Macula: normal
OS: Optic disc: pale pink with sharp margind. C/D 0,35. Macula: normal

Treatment:

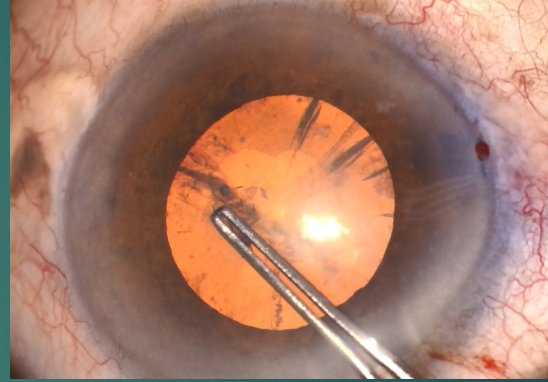
OS phacoemulsification planned

Intraoperative

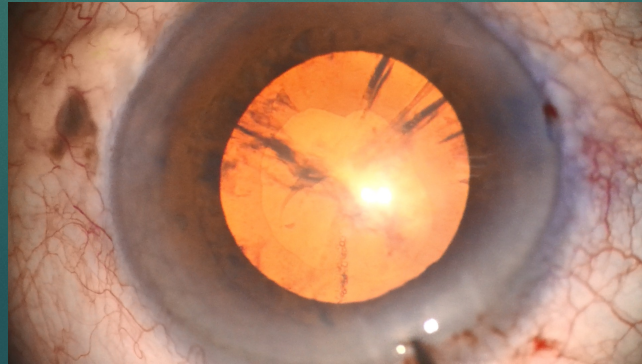
- Initiation of capsulorrhexis



- Capsulorrhexis continuance

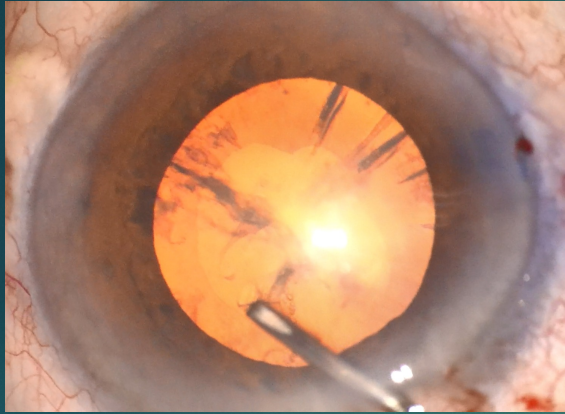


- Capsulorrhexis completion

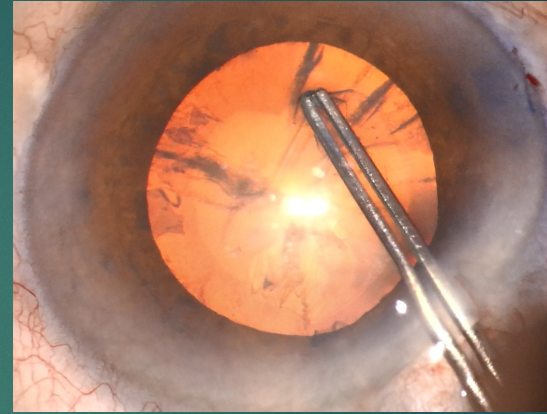


Finding: second layer of the anterior lens capsule after the integration of capsulorrhexis

➤ 2nd capsulorrhexis initiation



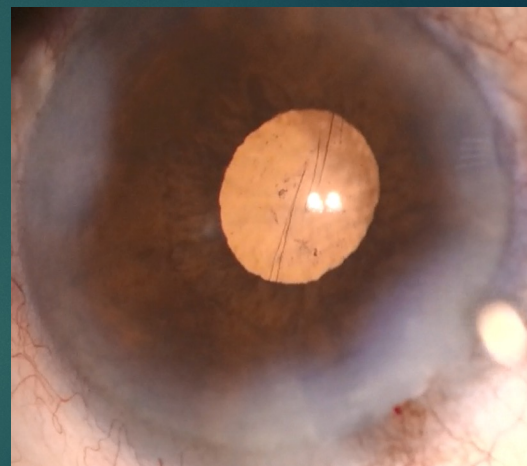
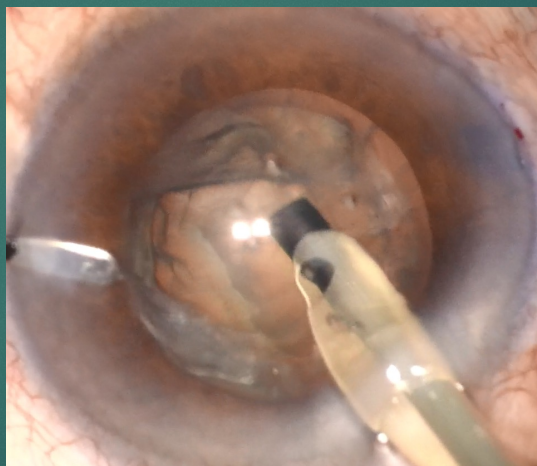
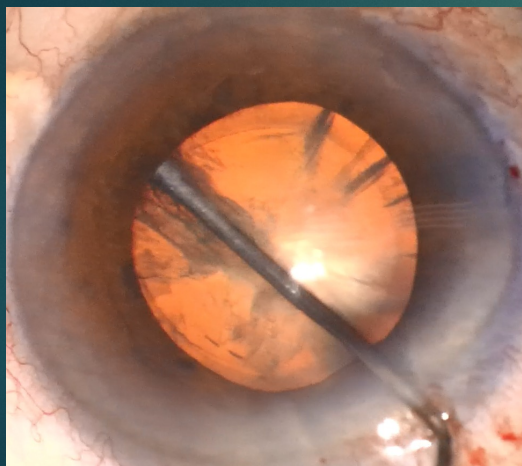
➤ 2nd capsulorrhexis continuance



➤ 2nd capsulorrhexis completion



- ▶ Uneventful surgery igretation with IOL implantation in the bag



References

1. Abe T, Hirata H, Hayasaka S. Double-ring and double-layer sign of the anterior lens capsule during cataract surgery. *Jpn J Ophthalmol*. 2001 Nov-Dec;45(6):657-8. doi: 10.1016/s0021-5155(01)00415-4. PMID: 11754912.
2. Ataka S, Kohno T, Kurita K, Wada S, Takahashi Y, Shiraki K. Histopathological study of the anterior lens capsule with a double-ring sign. *Graefes Arch Clin Exp Ophthalmol*. 2004 Mar;242(3):245-9. doi: 10.1007/s00417-003-0814-6. Epub 2003 Nov 26. PMID: 14648141.
3. Drew-Bear LE, Abousy M, Eberhart CG, Arevalo JF, Behrens A. Pseudo second anterior lens capsule during post-vitrectomy cataract surgery: A case report. *Am J Ophthalmol Case Rep*. 2022 Sep 6;28:101700. doi: 10.1016/j.ajoc.2022.101700. PMID: 36111278; PMCID: PMC9467872.